

Dampers

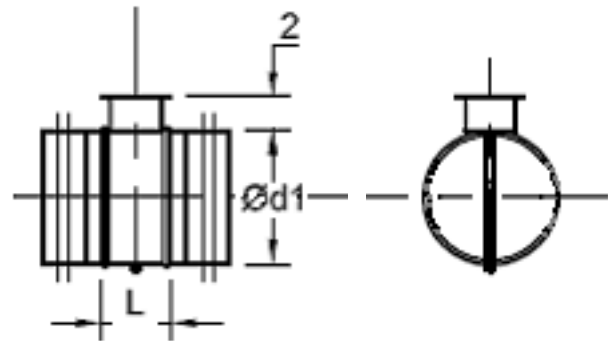
DSU/DSWU



DSU



DSWU



Description

- manual balancing damper w/ full blade
- for use in systems where a complete shut-off of air flow is not required
 - gasketed shaft-mounted load bearing bushing to minimize air leakage
 - integral shaft-blade assembly
 - 2" sheet metal insulation stand-off
 - locking blade quadrant w/damper position indicator
 - full fitting body assembly with bead stop

Also available:

DSWU– DS(U) damper with cable-operating option. Equipped with 20' cable.

Note: Dampers with $\text{Ød1} > 14"$ equipped with extended handle and a reinforced damper blade.

Dampers with $\text{Ød1} > 24"$ have 2" bracket in place of cup-shaped stand-off.

Order Example

Lindab Safe®
DSU - Ød1
DSWU - Ød1

Linx Nongasketed
DS - Ød1
DSW - Ød1

Dimension

Ød1	'L'	Shaft
inch	inch	mm ²
4	3.9	8*
5	3.9	8*
6	3.9	8*
7	3.9	8*
8	3.9	8*
9	3.9	8*
10	3.5	8*
12	3.5	8*
14	3.5	8*
16	3.75	8*
18	3.75	8*
20	3.75	8*
22	3.75	8*
24	3.75	8*
26	3.75	8*
28	3.75	8*
30	3.75	8*
32	10.4	25.4**
34	10.4	25.4**
36	10.4	25.4**

* 2" shaft extensions available
** 1" square tube shaft